

# **New pests and future problems**

**David Pinniger**

IPM

1

## **The main causes of change to pest distribution?**

- **General increases in temperature**



IPM

2

2

## How will we know pests are changing?

### Better identification of pests



*Anobium punctatum*



*Oligomerus ptilinoides*

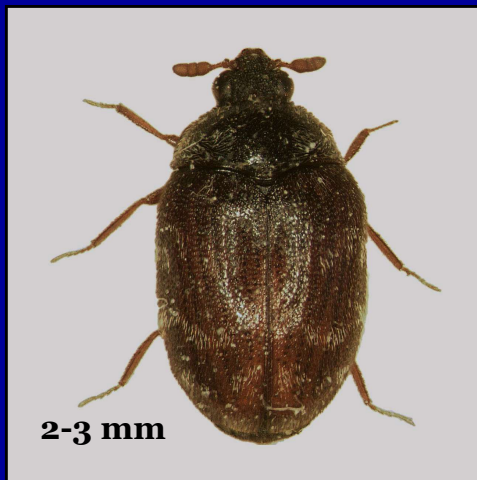
### Does it matter?

IPM

3

## Australian carpet beetle

*Anthrenocerus australis*



IPM

4

## Distribution of *Anthrenocerus australis* in the UK

- First found in North London in 1938
- Infestation discovered in an office carpet in the Victoria and Albert Museum in 2010
- Adults found in Kensington Palace and a National Trust House in London in 2012
- Adults found in a flat in Yorkshire in 2013
- Larvae found in a carpet in Kensington Palace in 2014. They were still there in 2018.
- Many adult beetles found in Greenwich
- Adults found in the Herbarium at RBG Kew

IPM

5

5

## Larvae from Kensington Palace

*Anthrenocerus australis*

What else will it eat?



IPM

6

**Australian carpet beetle**  
*Anthrenocerus australis*  
Will it spread in the UK?

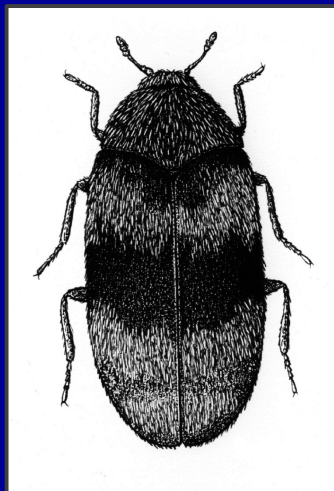


IPM

7

7

**The Berlin beetle**  
*Trogoderma angustum*



IPM

8



## Berlin beetle *Trogoderma angustum*

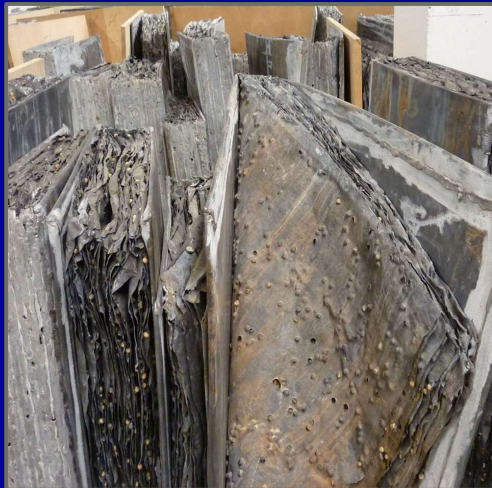
Larvae will damage botanical specimens



IPM

9

## The Berlin beetle *Trogoderma angustum*



Damage to an Art installation

IPM

10

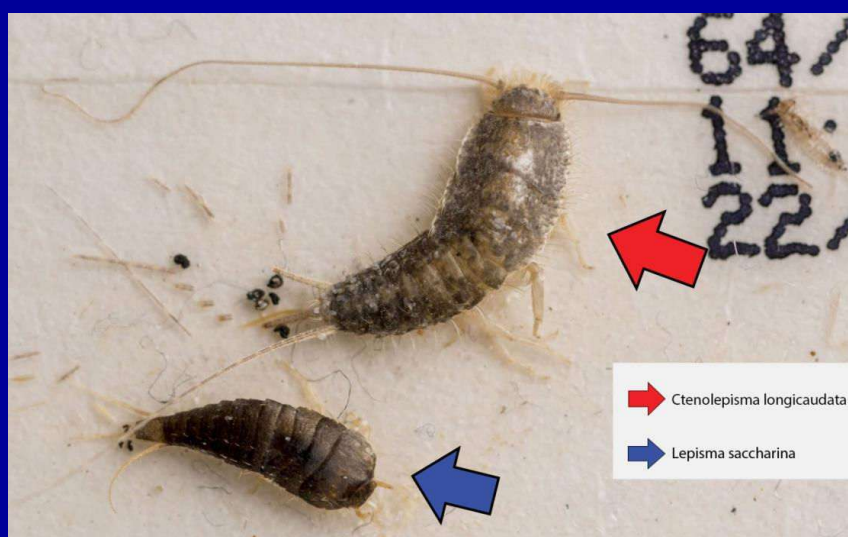
## The new grey silverfish pest *Ctenolepisma longicaudatum*



IPM

11

## Silverfish and Grey silverfish on a trap



IPM

12

## *Ctenolepisma longicaudatum* Grey silverfish

Now found throughout  
northern Europe as a  
domestic and museum pest

- Austria
- Belgium
- Denmark
- Germany
- Netherlands
- Norway
- Sweden
- UK
- USA?



IPM

13

13

## Spread of grey silverfish *Ctenolepisma longicaudatum*



14

**What will we find now?**



*C. lineata*



*C. calvum*

15

**What will we find next year?**

IPM

16