

V&A East



A new approach to IPM audits at V&A East Storehouse

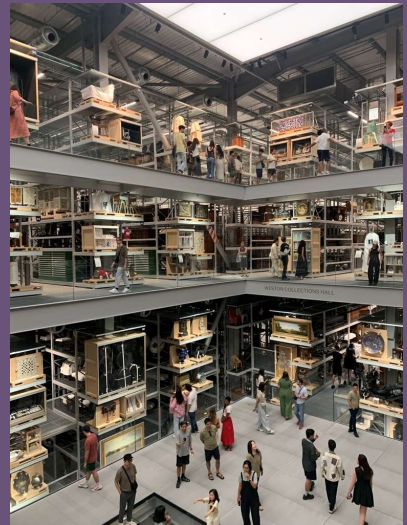


1



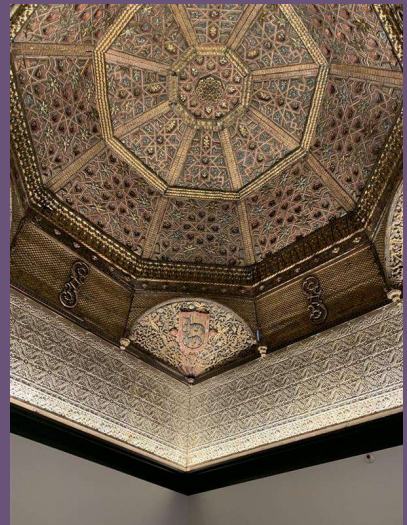
The context of V&A East Storehouse

2



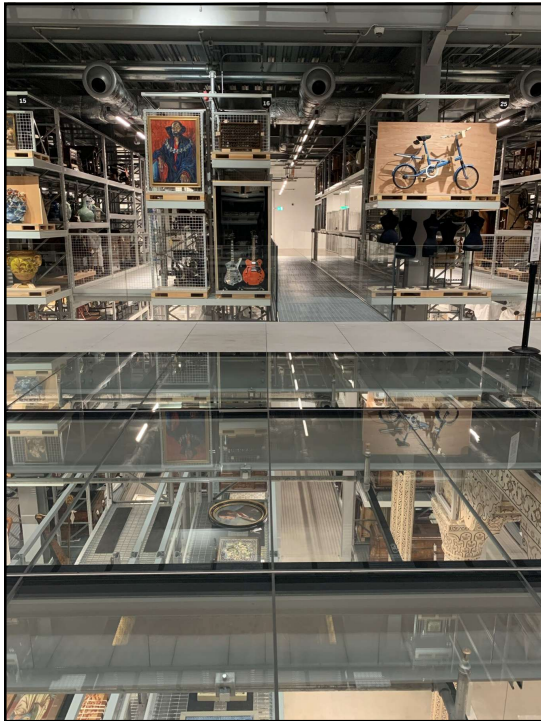
The design

3



The function

4



The design and function of V&A East Storehouse encourage access, but they challenge established IPM monitoring

5

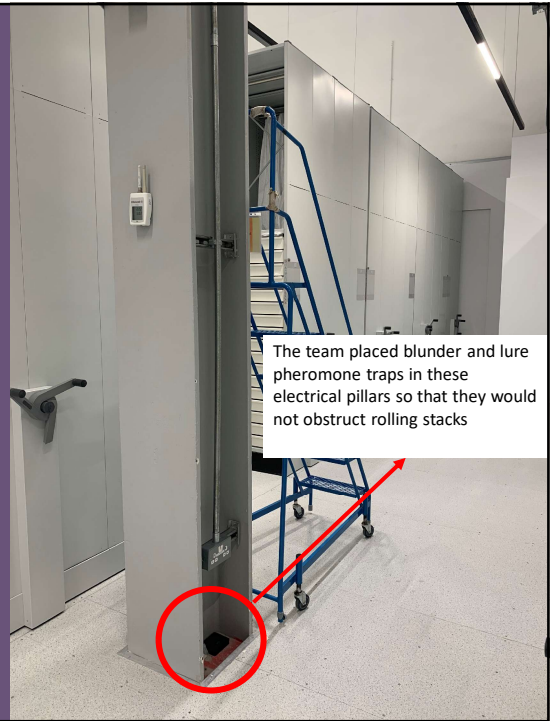
- An embroidered panel by Glasgow designer Ann Macbeth, 1905-1915
- When it was being photographed in June this year, the photographer noticed a discrepancy, which upon closer inspection, was a small moth
- The object's permanent location and monitor placements around the building identified an issue in typical IPM monitoring programmes

Object in focus: Panel T.60-2021



6

Almost 90% of traps placed around V&A East Storehouse were clear of pests this quarter



7

## IPM monitoring going forward



- Producing and implementing 'targeted inspections' that coincides with quarterly trap changeovers
- Creating a survey form for pest sightings (for all sites) so that we begin to generate data from these inspections and from pest sightings
- Continuing the monitoring programme by adding traps to all collections spaces, including study rooms, to establish critical pest density on this site as well as at South Kensington

8

Thank you!



Emma Rhodes | Preventive Conservator & Hebe Halstead | Preventive Conservator (Environmental)  
[e.rhodes@vam.ac.uk](mailto:e.rhodes@vam.ac.uk) [h.halstead@vam.ac.uk](mailto:h.halstead@vam.ac.uk)

