

Clothes Moths



Photo Courtesy Christina Cain



Photo Courtesy Christina Cain

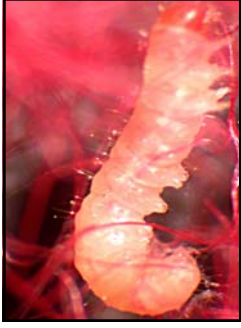


Photo Courtesy Christina Cain



Photo Courtesy Clemson University -
USDA Cooperative Extension Slide
Series, Bugwood.org



Photo Courtesy Christina Cain



Photo Courtesy Clemson University -
USDA Cooperative Extension Slide
Series, Bugwood.org

Clothes Moths

- ☞ Clothes moths are not miller moths. They are very small gold moths. They measure about 1/4" long.
- ☞ Moth larvae are small, white and worm-like with a red-orange head. The larvae usually eat wool, skin, fur and other protein materials.
- ☞ The moths and larvae also leave behind webbing and/or small cases made of the fabric they were eating. They may also leave behind small pellets in the color of what they were eating.
- ☞ These moths do not like light. They prefer warm, humid dark spaces.
- ☞ If you see a moth, kill it, but try not to smash it. The pest team will need an in-tact specimen for identification. If you see larvae, do not kill it. Leave it where it is and contact the pest team.

Dermeitids—Carpet Beetles and Odd Beetles



Photo Courtesy Christina Cain

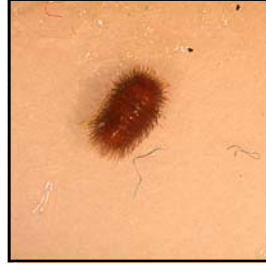


Photo Courtesy Christina Cain



Photo Courtesy Christina Cain



Photo Courtesy Clemson University -
USDA Cooperative Extension Slide
Series, Bugwood.org



Photo Courtesy Clemson University -
USDA Cooperative Extension Slide
Series, Bugwood.org



Photo Courtesy Christina Cain

Dermeitids—Carpet Beetles

- ☞ Dermeitids are very small beetles. They look like gnats when they are in flight.
- ☞ Most dermeitids and their larvae are 1/16" -1/8".
- ☞ The larvae are the newly hatched form of this pest and can appear worm-like. They eat protein material, including hair, skin, feathers and fur.
- ☞ You may see cast skins. These can look like lint from a distance.
- ☞ When you see one, try to catch it and put it in a plastic bag. If you have to kill it, try not to completely smash it. The pest team will need an in-tact specimen for identification.

Book Lice



Photo Courtesy Christina Cain



Photo Courtesy Christina Cain



Photo Courtesy Christina Cain

Book Lice (Psocids)

- Book lice, or Psocids, are extremely tiny and usually cannot be identified without use of a microscope. They will often appear to be a moving speck of dust.
- Psocids (SO-sids) are soft bodied insects. They may have four wings or be wingless.
- Booklice feed most commonly on molds and fungi and other starchy material, including the glue in book bindings.
- They can be found in damp, warm, undisturbed places.
- Make sure any leaks or drippy faucets are repaired and cleaned up immediately to avoid attracting these pests.

Silverfish/Firebrats



Gary Alpert, Harvard University, Bugwood.org



Photo Courtesy Christina Cain

Silverfish/Firebrats

- Silverfish and firebrats are very similar in appearance and behavior. They are silver or gray in appearance and long with long antennae and legs. They move very quickly.
- Both silverfish and firebrats depend on water for survival. They can be found around sinks and leaky pipes.
- Silverfish and firebrats eat paper and starch adhesives.
- Make sure any leaks or drippy faucets are repaired and cleaned up immediately to avoid attracting these pests.
- If you see silverfish or firebrats, please notify the pest team.



Photo Courtesy Christina Cain

Other Pests of Concern



Cigarette Beetle Photo Courtesy Clemson University - USDA Cooperative Extension Slide Series, Bugwood.org



Powderpost Beetle USDA Forest Service Archive, USDA Forest Service, Bugwood.org



Brown Banded Cockroach Photo Courtesy Christina Cain



Deer Mouse David Cappaert, Michigan State University, Bugwood.org



Carpenter Ant Joseph Berger, Bugwood.org



Termites USDA ARS Photo Unit, USDA Agricultural Research Service, Bugwood.org

Other Pests of Concern

Report the following to the pest management team:

- ☞ Any beetles
 - ☞ Any rodent or rodent activity
 - ☞ Any ants that appear to be an infestation (i.e. more than 5 together)
 - ☞ Anything that looks like a winged ant
 - ☞ Anything that looks like a cockroach
 - ☞ Any spiders that resemble live specimens of black widows or brown recluse
- Please try to capture live specimens of these pests if possible.
- Do not smash beetles, winged ants, roaches, etc. Please do not approach rodents or questionable spiders.