

MuseumPests.net

A Product of the Integrated Pest Management Working Group

Oriental Cockroach *Blatta orientalis* (Linnaeus)



GENERAL INFORMATION

The Oriental cockroach is worldwide in distribution. Shad cockroach is an unofficial name sometimes used for this species. It can live outdoors as well as indoors. It can be found under stones, leaves, debris, and in wall voids.

SIGNS OF INFESTATION

Door thresholds, utility pipes at ground level and basement level floor drains should be inspected for adults and nymphs. Inside buildings they are usually found in crawlspaces, basements, and cellars. Sighting on higher levels are usually associated with water pipes that have been climbed.

FOOD SOURCES

Oriental cockroaches feed on many food types and decaying organic matter. Starchy foods are preferred.

LIFE CYCLE

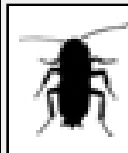
Female Oriental cockroaches drop or glue their ootheca within 30 hours of forming. One female can produce 1 to 18 oothecae in their lifetime. The oothecae are 3/8" long with 16 eggs. Development time varies from 206 to 800 days depending upon temperature. At room temperature, development time is 575 to 602 days. Adult females live from 34 to 181 days and males live from 112 to 160 days.



DIAGNOSTIC MORPHOLOGY

Adults:

- Adult males are 1" (25mm) long and females are 1 1/4" (32mm) long.
- Color is shiny black to dark reddish brown.
- Wings on males cover only part of the abdomen leaving 3 to 5 abdominal segments exposed and wings on the female are much reduced. Female wings look similar to nymphal wing pads but with veins.
- Middle segments of the cerci are about 3 times wide as long.



Immature Stage:

- Cockroaches experience gradual metamorphosis and have no larval form. The process goes from egg to nymphal instars to adult.



CONTROL & TREATMENT

There are a variety of pest management tools and tactics to control Oriental Cockroaches. Physical removal, exclusion, chemical contact pesticides, pesticide baits, and other tactics can be used based on the infested area inside or outside. Inside areas usually focused on are related to doorways, drains, and basement related areas.

Fact Sheet: Oriental Cockroach

Photo credit for image on upper right:

Reinbold, Matt, 2007, Available from Encyclopedia of Life at <http://www.eol.org/pages/1076404>